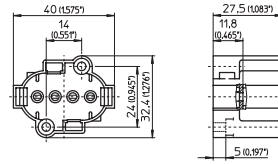


2GX7 back panel mount lampholder
 Casing: PBT GF, white
 Rear mounting holes for self-tapping #8 screws
 Front mounting holes for #4 screws (M3)
 Weight: 14g, packing qty.: 500 pcs.
 Type: 35622
Ref. No.: 109241



new >>

G24 Lampholders for Quad-tube Lamps, GX24 Lampholders for Triple-tube Lamps

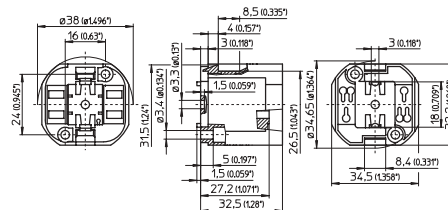
For Single-ended Compact Fluorescent Bi-pin and 4-pin Lamps

The drawings and photos contained in this chapter only show lampholders for lamps with base G24d-1. Additional drawings of lamp bases can be found on page 127.
 All T ratings in this chapter refer to IEC standards

When mounting lampholder remember triple-tube GX24d/GX24q lamps are wider than lampholder. When using central-mounting hole provisions must be made to prevent lampholder rotation.

All lampholders with quick-connect terminals (UL File No. E110363): 18AWG solid or stranded solder-dipped

G24, GX24 lampholders
 Plain casing
 Casing: PBT GF, white, T140 (acc. to IEC)
 Nominal rating: 660W/600V
 Quick-connect twin terminals: 18AWG (lamp circuit)
 For G24q, GX24q lampholders:
 quick-connect terminals: 18AWG (starter circuit)
 Rear mounting holes for self-tapping #8 screws
 Front mounting holes for #4 screws (M3)
 Central-mounting hole for #4 screw (M3)
 With tabs for rotation stop
 For cover caps (see p. 167)



| | Type | Ref. No. | Base | Output (W) | Weight (g) | Packing qty. (pcs.) |
|------------------------|-------|---------------|----------------|----------------|------------|---------------------|
| new >> | 71501 | 527735 | G24d-1/GX24d-1 | 8, 10, 13 / 13 | 11.8 | 500 |
| new >> | 71502 | 527736 | G24d-2/GX24d-2 | 18 / 18 | 11.8 | 500 |
| new >> | 71503 | 527737 | G24d-3/GX24d-3 | 26 / 26 | 11.8 | 500 |
| new >> | 71511 | 527739 | G24q-1/GX24q-1 | 10, 13 / 13 | 14.3 | 500 |
| new >> | 71512 | 527740 | G24q-2/GX24q-2 | 18 / 18 | 14.3 | 500 |
| new >> | 71513 | 527741 | G24q-3/GX24q-3 | 26 / 26, 32 | 14.3 | 500 |
| new >> | 71519 | 527745 | GX24q-3/-4* | 26, 32 / 42 | 14.3 | 500 |
| new >> | 71514 | 527742 | GX24q-4 | 42 | 14.3 | 500 |
| new >> | 71515 | 527743 | GX24q-5 | 57 | 15 | 500 |
| new >> | 71516 | 527744 | GX24q-6 | 70 | 15 | 500 |
| Shunted Version | | | | | | |
| new >> | 71511 | 527747 | G24q-1/GX24q-1 | 10, 13 / 13 | 14.3 | 500 |
| new >> | 71512 | 527748 | G24q-2/GX24q-2 | 18 / 18 | 14.3 | 500 |
| new >> | 71513 | 527749 | G24q-3/GX24q-3 | 26 / 26, 32 | 14.3 | 500 |
| new >> | 71519 | 527753 | GX24q-3/-4* | 26, 32 / 42 | 14.3 | 500 |
| new >> | 71514 | 527750 | GX24q-4 | 42 | 14.3 | 500 |
| new >> | 71515 | 527751 | GX24q-5 | 57 | 15 | 500 |
| new >> | 71516 | 527752 | GX24q-6 | 70 | 15 | 500 |

* Lampholders 527745 and 527753 may only be used in luminaires that are operated with electronic ballasts that have been certified according to the applicable standards and that cover the luminaire performance range of 26, 32 and 42W.

